

Discharge Measurement Summary

Site name Ecanal
Site number 02
Operator(s) TMiller
File name EastCanal_20230331_1145.ft
Comment

Start time	3/31/2023 11:45 AM	Sensor type	Top Setting
End time	3/31/2023 12:22 PM	Handheld serial number	FT2H2219029
Start location latitude	42.809	Probe serial number	FT2P2219014
Start location longitude	-118.869	Probe firmware	1.30
Calculations engine	FlowTracker2	Handheld software	1.7

# Stations	Avg interval (s)	Total discharge (m³/s)
21	40	0.5454

Total width (m)	Total area (m²)	Wetted Perimeter (m)
3.658	1.15107	4.058

Mean SNR (dB)	Mean depth (m)	Mean velocity (m/s)
27	0.315	0.4738

Mean temp (°C)	Max depth (m)	Max velocity (m/s)
5.406	0.396	0.7422

Discharge Uncertainty		
Category	ISO	IVE
Accuracy	1.0%	1.0%
Depth	0.2%	2.4%
Velocity	0.7%	1.8%
Width	0.1%	0.1%
Method	2.0%	
# Stations	2.4%	
Overall	3.4%	3.1%

Discharge equation	Mid Section
Discharge uncertainty	IVE
Discharge reference	Rated

Data Collection Settings	
Salinity	0.000 PSS-78
Temperature	-
Sound speed	-
Mounting correction	0.000 %

Summary overview

No changes were made to this file
Quality control warnings



Discharge Measurement Summary

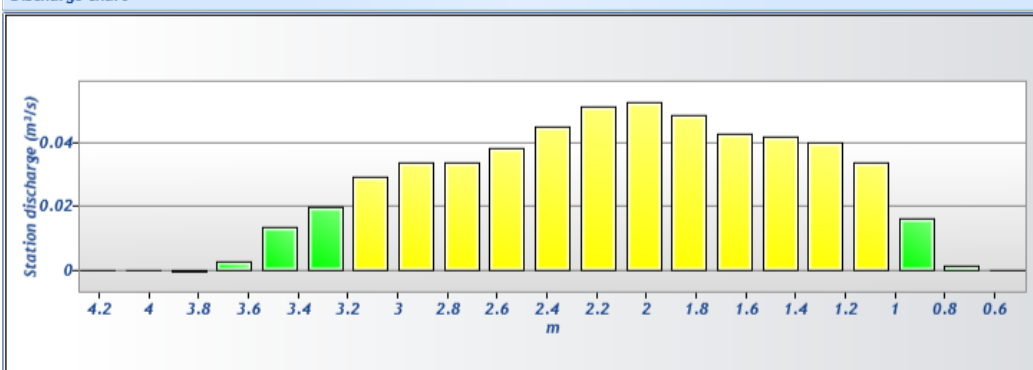
Site name Ecanal
Site number 02
Operator(s) TMiller
File name EastCanal_20230331_1145.ft
Comment

Station Warning Settings

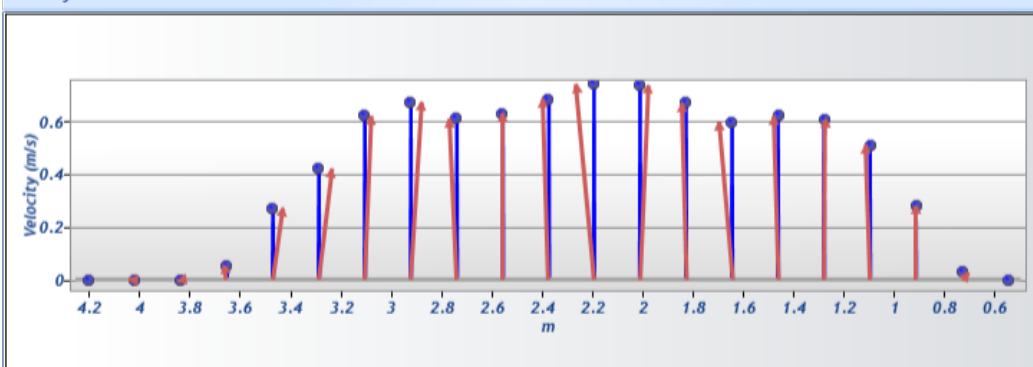
Station discharge OK	Station discharge < 5.00%
Station discharge caution	5.00% >= Station discharge < 10.00%
Station discharge warning	Station discharge >= 10.00%



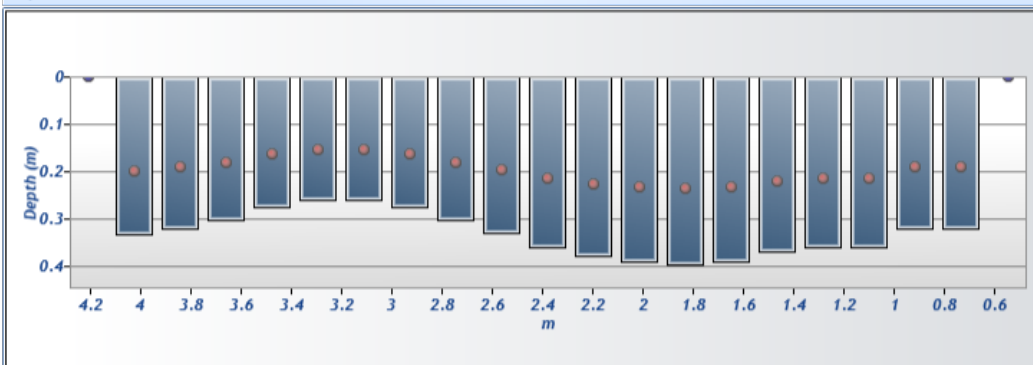
Discharge chart

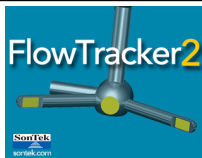


Velocity chart



Depth chart



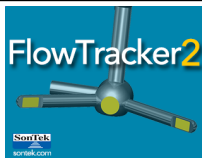


Discharge Measurement Summary

Site name Ecanal
Site number 02
Operator(s) TMiller
File name EastCanal_20230331_1145.ft
Comment

Measurement results

St#	Time	Location (m)	Method	Depth (m)	%Depth	Measured Depth (m)	Samples	Velocity (m/s)	Correcti on	Mean Velocity (m/s)	Area (m ²)	Flow (m ³ /s)	%Q	
0	11:45 AM	0.549	None	0.000	0.0000	0.000	0	0.0000	1.0000	0.0292	0.00000	0.0000	0.00	✓
1	11:46 AM	0.732	0.6	0.320	0.6000	0.192	80	0.0292	1.0000	0.0292	0.05853	0.0017	0.31	✓
2	11:49 AM	0.914	0.6	0.320	0.6000	0.192	80	0.2803	1.0000	0.2803	0.05853	0.0164	3.01	✓
3	11:51 AM	1.097	0.6	0.360	0.6000	0.216	80	0.5117	1.0000	0.5117	0.06578	0.0337	6.17	✓
4	11:53 AM	1.280	0.6	0.360	0.6000	0.216	80	0.6065	1.0000	0.6065	0.06578	0.0399	7.31	✓
5	11:55 AM	1.463	0.6	0.369	0.6000	0.221	80	0.6220	1.0000	0.6220	0.06745	0.0420	7.69	✓
6	11:57 AM	1.646	0.6	0.390	0.6000	0.234	80	0.5976	1.0000	0.5976	0.07135	0.0426	7.82	✓
7	11:59 AM	1.829	0.6	0.396	0.6000	0.238	80	0.6707	1.0000	0.6707	0.07246	0.0486	8.91	✓
8	12:01 PM	2.012	0.6	0.390	0.6000	0.234	80	0.7375	1.0000	0.7375	0.07135	0.0526	9.65	✓
9	12:02 PM	2.195	0.6	0.378	0.6000	0.227	80	0.7422	1.0000	0.7422	0.06912	0.0513	9.41	✓
10	12:04 PM	2.377	0.6	0.360	0.6000	0.216	80	0.6855	1.0000	0.6855	0.06578	0.0451	8.27	✓
11	12:06 PM	2.560	0.6	0.329	0.6000	0.198	80	0.6318	1.0000	0.6318	0.06020	0.0380	6.97	✓
12	12:08 PM	2.743	0.6	0.302	0.6000	0.181	80	0.6115	1.0000	0.6115	0.05518	0.0337	6.19	✓
13	12:10 PM	2.926	0.6	0.274	0.6000	0.165	80	0.6728	1.0000	0.6728	0.05017	0.0338	6.19	✓
14	12:11 PM	3.109	0.6	0.259	0.6000	0.155	80	0.6219	1.0000	0.6219	0.04738	0.0295	5.40	✓
15	12:13 PM	3.292	0.6	0.259	0.6000	0.155	80	0.4223	1.0000	0.4223	0.04738	0.0200	3.67	✓
16	12:14 PM	3.475	0.6	0.274	0.6000	0.165	80	0.2715	1.0000	0.2715	0.05017	0.0136	2.50	✓
17	12:16 PM	3.658	0.6	0.302	0.6000	0.181	80	0.0534	1.0000	0.0534	0.05518	0.0029	0.54	✓
18	12:17 PM	3.840	0.6	0.320	0.6000	0.192	80	-0.0018	1.0000	-0.0018	0.05853	-0.0001	-0.02	✓
19	12:19 PM	4.023	0.6	0.332	0.6000	0.199	80	0.0010	1.0000	0.0010	0.06076	0.0001	0.01	✓
20	12:22 PM	4.206	None	0.000	0.0000	0.000	0	0.0000		0.0010	0.00000	0.0000	0.00	✓

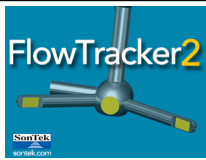


Discharge Measurement Summary

Site name Ecanal
Site number 02
Operator(s) TMiller
File name EastCanal_20230331_1145.ft
Comment

Quality Control Settings	
Maximum depth change	50.00%
Maximum spacing change	100.00%
SNR threshold	10 dB
Standard error threshold	0.0100 m/s
Spike threshold	10.00%
Maximum velocity angle	20.0 deg
Maximum tilt angle	5.0 deg

Quality control warnings							
St#	Time	Location (m)	Method	Depth (m)	%Depth	Measured Depth (m)	Warnings
1	11:46 AM	0.732	0.6	0.320	0.6000	0.192	Large SNR Variation, Velocity Angle > QC
2	11:49 AM	0.914	0.6	0.320	0.6000	0.192	Large SNR Variation, Standard Error > QC
3	11:51 AM	1.097	0.6	0.360	0.6000	0.216	Standard Error > QC
4	11:53 AM	1.280	0.6	0.360	0.6000	0.216	Standard Error > QC
5	11:55 AM	1.463	0.6	0.369	0.6000	0.221	Standard Error > QC
6	11:57 AM	1.646	0.6	0.390	0.6000	0.234	Standard Error > QC
7	11:59 AM	1.829	0.6	0.396	0.6000	0.238	Standard Error > QC
8	12:01 PM	2.012	0.6	0.390	0.6000	0.234	Standard Error > QC
9	12:02 PM	2.195	0.6	0.378	0.6000	0.227	Standard Error > QC
10	12:04 PM	2.377	0.6	0.360	0.6000	0.216	Standard Error > QC
11	12:06 PM	2.560	0.6	0.329	0.6000	0.198	Standard Error > QC
12	12:08 PM	2.743	0.6	0.302	0.6000	0.181	Standard Error > QC
13	12:10 PM	2.926	0.6	0.274	0.6000	0.165	Standard Error > QC
14	12:11 PM	3.109	0.6	0.259	0.6000	0.155	Standard Error > QC
17	12:16 PM	3.658	0.6	0.302	0.6000	0.181	Large SNR Variation
18	12:17 PM	3.840	0.6	0.320	0.6000	0.192	Large SNR Variation, SNR Threshold Variation
19	12:19 PM	4.023	0.6	0.332	0.6000	0.199	Large SNR Variation
20	12:22 PM	4.206	None	0.000	0.0000	0.000	Water Depth > QC



Discharge Measurement Summary

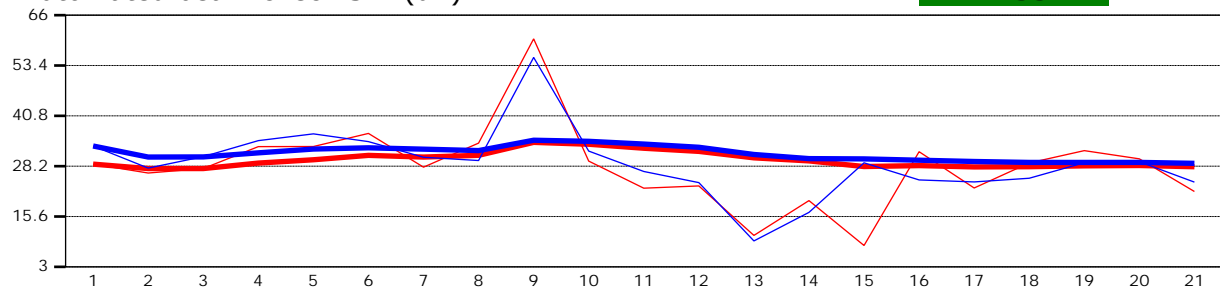
Site name Ecanal
Site number 02
Operator(s) TMiller
File name EastCanal_20230331_1145.ft
Comment

Beam 1	
Beam 2	

Automated beam check Start time 3/31/2023 11:45:32 AM

Automated beam check SNR(dB)

PASS



Automated beam check Noise level(cnts)

PASS



Automated beam check Quality control warnings

No quality control warnings



Discharge Measurement Summary

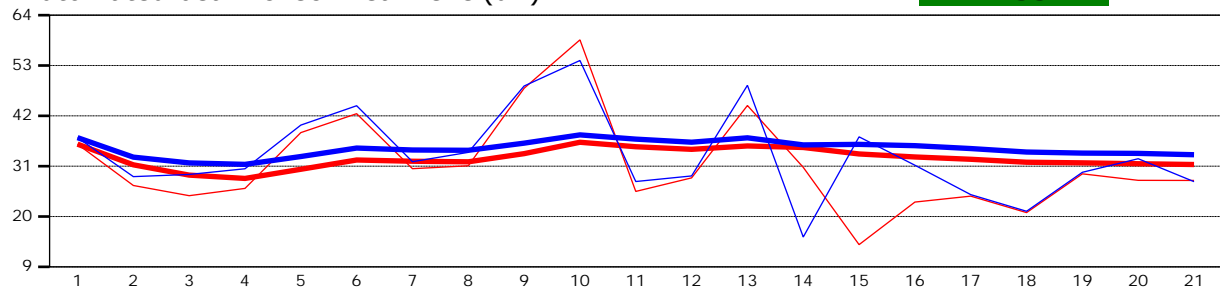
Site name Ecanal
Site number 02
Operator(s) TMiller
File name EastCanal_20230331_1145.ft
Comment

Beam 1	
Beam 2	

Automated beam check Start time 3/31/2023 11:45:32 AM

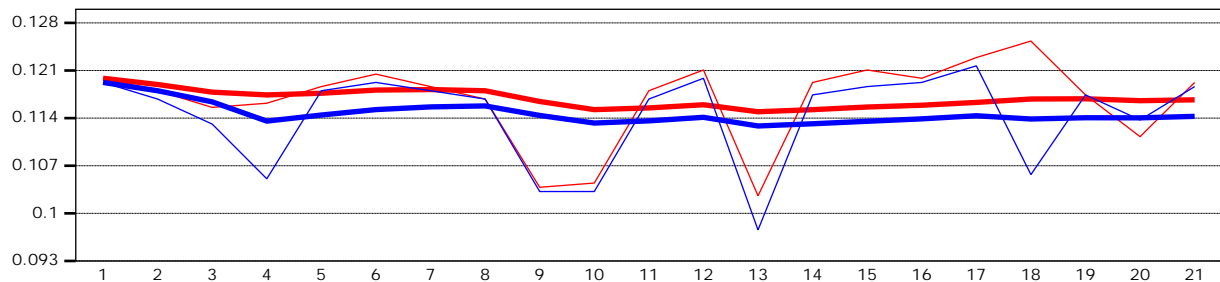
Automated beam check Peak level(dB)

PASS



Automated beam check Peak position(m)

PASS



Automated beam check Quality control warnings

No quality control warnings